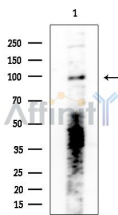


TLR9 Ab

[References\(7\)](#) [Images\(7\)](#)

Cat.#: DF2970	Concn.: ~1mg/ml	Mol.Wt.: 117kD,140kD(full), 45kD,75kD(cleaved)
Size:	Source: Rabbit	Clonality: Polyclonal
Application:	WB 1:1000-3000, IHC 1:500-1:2000, IF/ICC 1:100-1:500 *The optimal dilutions should be determined by the end user.	
Reactivity:	Human,Mouse,Rat	
Storage:	Rabbit IgG in phosphate buffered saline , pH 7.4, 150mM NaCl, 0.02% sodium azide and 50% glycerol. Store at -20 °C. Stable for 12 months from date of receipt.	
Purification:	The antiserum was purified by peptide affinity chromatography using SulfoLink™ Coupling Resin (Thermo Fisher Scientific).	
Immunogen:	A synthesized peptide derived from human TLR9, corresponding to a region within the internal amino acids.	
Uniprot:	Q9NR96	



Western blot analysis of extracts from EC304 cells, using TLR9 Ab at 1/1000 dilution.
Observed bands:98kD.

IMPORTANT: For western blot, incubate membrane with diluted primary Ab in 5% w/v milk , 1X TBS, 0.1% Tween@20 at 4°C with gentle shaking, overnight.

For Research Use Only. Not for use in diagnostic and therapeutic procedures. Not for resale without express authorization.