

## Phospho-FADD (Ser194) Ab

[References\(2\)](#) [Images\(3\)](#)

Cat.#: DF2996                      Concn.: ~1mg/ml                      Mol.Wt.: 23KD  
Size:                                      Source: Rabbit                          Clonality: Polyclonal

Application:                          WB 1:1000-3000, IF/ICC 1:100-1:500, IHC 1:50-1:200  
\*The optimal dilutions should be determined by the end user.

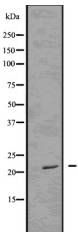
Reactivity:                            Human,Mouse,Rat

Storage:                                Rabbit IgG in phosphate buffered saline , pH 7.4, 150mM NaCl, 0.02% sodium azide and 50% glycerol. Store at -20 °C. Stable for 12 months from date of receipt.

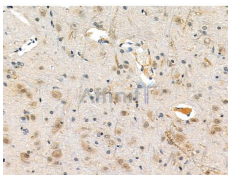
Purification:                         The Ab is from purified rabbit serum by affinity purification via sequential chromatography on phospho-peptide and non-phospho-peptide affinity columns.

Immunogen:                          A synthesized peptide derived from human FADD around the phosphorylation site of Ser194.

Uniprot:                                Q13158



Western blot analysis of Phospho-FADD (Ser194) using COLO205 whole cell lysates



DF2996 at 1/100 staining Rat brain tissue by IHC-P. The sample was formaldehyde fixed and a heat mediated antigen retrieval step in citrate buffer was performed. The sample was then blocked and incubated with the primary Ab at 4°C overnight. An HRP conjugated anti-Rabbit Ab was used as the secondary Ab.

**IMPORTANT:** For western blot, incubate membrane with diluted primary Ab in 5% w/v milk , 1X TBS, 0.1% Tween@20 at 4°C with gentle shaking, overnight.

For Research Use Only. Not for use in diagnostic and therapeutic procedures. Not for resale without express authorization.