

Phospho-ACK1 (Tyr857/Tyr858) Ab

[Images\(1\)](#)

Cat.#: DF2998

Size:

Concn.: ~1mg/ml

Source: Rabbit

Mol.Wt.: 115KD

Clonality: Polyclonal

Application:

WB 1:1000-3000, IF/ICC 1:100-1:500

*The optimal dilutions should be determined by the end user.

Reactivity:

Human

Storage:

Rabbit IgG in phosphate buffered saline , pH 7.4, 150mM NaCl, 0.02% sodium azide and 50% glycerol. Store at -20 °C. Stable for 12 months from date of receipt.

Purification:

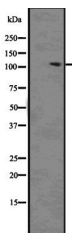
The Ab is from purified rabbit serum by affinity purification via sequential chromatography on phospho-peptide and non-phospho-peptide affinity columns.

Immunogen:

A synthesized peptide derived from human ACK1 around the phosphorylation site of Tyr857/858.

Uniprot:

Q07912



Western blot analysis of extracts from HeLa cells, using Phospho-Ack1 (Tyr857/Tyr858) Ab.

IMPORTANT: For western blot, incubate membrane with diluted primary Ab in 5% w/v milk , 1X TBS, 0.1% Tween@20 at 4°C with gentle shaking, overnight.

For Research Use Only. Not for use in diagnostic and therapeutic procedures. Not for resale without express authorization.