

ANKRD26 Ab

[Images\(4\)](#)

Cat.#: AF0384	Concn.: ~1mg/ml	Mol.Wt.: 196kDa
Size:	Source: Rabbit	Clonality: Polyclonal

Application: IHC 1:50-1:200, WB 1:500-1:2000
*The optimal dilutions should be determined by the end user.

Reactivity: Human, Mouse, Rat

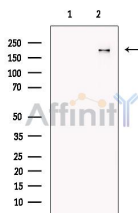
Storage: Rabbit IgG in phosphate buffered saline, pH 7.4, 150mM NaCl, 0.02% sodium azide and 50% glycerol. Store at -20 °C. Stable for 12 months from date of receipt.

Purification: The antiserum was purified by peptide affinity chromatography using SulfoLink™ Coupling Resin (Thermo Fisher Scientific).

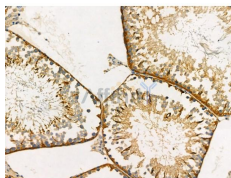
Immunogen: A synthesized peptide derived from human ANKRD26, corresponding to a region within the internal amino acids.

Uniprot: Q9UPS8

Description: ANKRD26 3 isoforms of the human protein are produced by alternative splicing.



Western blot analysis of extracts from HeLa cells, using ANKRD26 Ab. The lane on the left was treated with blocking peptide.



AF0384 at 1/100 staining Rat testis tissue by IHC-P. The sample was formaldehyde fixed and a heat mediated antigen retrieval step in citrate buffer was performed. The sample was then blocked and incubated with the primary Ab at 4°C overnight. An HRP conjugated anti-Rabbit Ab was used as the secondary Ab.

IMPORTANT: For western blot, incubate membrane with diluted primary Ab in 5% w/v milk, 1X TBS, 0.1% Tween@20 at 4°C with gentle shaking, overnight.

procedures. Not for resale without express authorization.