

## Substance P Ab

[References\(12\)](#) [Images\(7\)](#)

Cat.#: DF7522                      Concn.: ~1mg/ml                      Mol.Wt.: 16kDa  
Size:                                      Source: Rabbit                              Clonality: Polyclonal

Application:                      WB 1:1000-3000, IHC 1:50-1:200, IF/ICC 1:100-1:500  
\*The optimal dilutions should be determined by the end user.

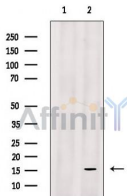
Reactivity:                      Human,Mouse,Rat

Storage:                      Rabbit IgG in phosphate buffered saline , pH 7.4, 150mM NaCl, 0.02% sodium azide and 50% glycerol. Store at -20 °C. Stable for 12 months from date of receipt.

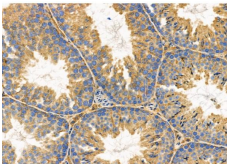
Purification:                      The antiserum was purified by peptide affinity chromatography using SulfoLink™ Coupling Resin (Thermo Fisher Scientific).

Immunogen:                      A synthesized peptide derived from human Substance P, corresponding to a region within the internal amino acids.

Uniprot:                      P20366



Western blot analysis of extracts from mouse spleen tissue, using Substance P Ab. The lane on the left was treated with blocking peptide.



DF7522 at 1/100 staining Mouse testis tissue by IHC-P. The sample was formaldehyde fixed and a heat mediated antigen retrieval step in citrate buffer was performed. The sample was then blocked and incubated with the primary Ab at 4°C overnight. An HRP conjugated anti-Rabbit Ab was used as the secondary Ab.

**IMPORTANT:** For western blot, incubate membrane with diluted primary Ab in 5% w/v milk , 1X TBS, 0.1% Tween@20 at 4°C with gentle shaking, overnight.

For Research Use Only. Not for use in diagnostic and therapeutic procedures. Not for resale without express authorization.