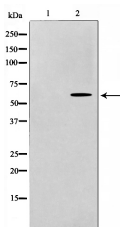


RAD18 Ab

[Images\(1\)](#)

Cat.#: AF0669	Concn.: ~1mg/ml	Mol.Wt.: 56kDa
Size:	Source: Rabbit	Clonality: Polyclonal

Application:	WB 1:500-1:2000, IF/ICC 1:100-1:500 *The optimal dilutions should be determined by the end user.
Reactivity:	Human,Rat
Storage:	Rabbit IgG in phosphate buffered saline , pH 7.4, 150mM NaCl, 0.02% sodium azide and 50% glycerol. Store at -20 °C. Stable for 12 months from date of receipt.
Purification:	The antiserum was purified by peptide affinity chromatography using SulfoLink™ Coupling Resin (Thermo Fisher Scientific).
Immunogen:	A synthesized peptide derived from human RAD18, corresponding to a region within the internal amino acids.
Uniprot:	Q9NS91
Description:	RAD18 a structural maintenance of chromosomes (SMC) protein involved in postreplication repair of UV-damaged DNA. Has ssDNA binding activity. Interacts with Rad6 through a conserved ring-finger motif. Rad6 is an ubiquitin-conjugating enzyme required for post-replication repair of damaged DNA.



Western blot analysis on LOVO cell lysates using RAD18 Ab, The lane on the left was treated with the antigen-specific peptide.

IMPORTANT: For western blot, incubate membrane with diluted primary Ab in 5% w/v milk , 1X TBS, 0.1% Tween@20 at 4°C with gentle shaking, overnight.

For Research Use Only. Not for use in diagnostic and therapeutic procedures. Not for resale without express authorization.