

Rictor Ab

[References\(1\)](#) [Images\(4\)](#)

Cat.#: DF7530

Concn.: ~1mg/ml

Mol.Wt.: 192 kDa

Size:

Source: Rabbit

Clonality: Polyclonal

Application:

WB 1:1000-3000, IHC 1:50-1:200

*The optimal dilutions should be determined by the end user.

Reactivity:

Human,Mouse,Rat,Monkey

Storage:

Rabbit IgG in phosphate buffered saline , pH 7.4, 150mM NaCl, 0.02% sodium azide and 50% glycerol. Store at -20 °C. Stable for 12 months from date of receipt.

Purification:

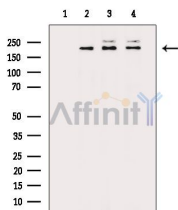
The antiserum was purified by peptide affinity chromatography using SulfoLink™ Coupling Resin (Thermo Fisher Scientific).

Immunogen:

A synthesized peptide derived from human Rictor, corresponding to a region within C-terminal amino acids.

Uniprot:

Q6R327



Western blot analysis of extracts from various samples, using Rictor Ab.

Lane 1: Cos-7 cells(h2o2 treatment), blocked with antigen-specific peptides.

Lane 2: Cos-7 cells(h2o2 treatment).

Lane 3: A549 cells(uv treatment).

Lane 4: Hela cells(heat-shock treatment).

IMPORTANT: For western blot, incubate membrane with diluted primary Ab in 5% w/v milk , 1X TBS, 0.1% Tween@20 at 4°C with gentle shaking, overnight.

For Research Use Only. Not for use in diagnostic and therapeutic procedures. Not for resale without express authorization.