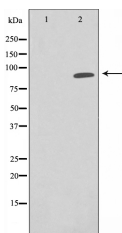


## EPN1 Ab

[Images\(1\)](#)

Cat.#: AF0700	Concn.: ~1mg/ml	Mol.Wt.: 85kDa
Size:	Source: Rabbit	Clonality: Polyclonal
Application:	WB 1:500-1:2000, IF/ICC 1:100-1:500 *The optimal dilutions should be determined by the end user.	
Reactivity:	Human, Mouse, Rat	
Storage:	Rabbit IgG in phosphate buffered saline, pH 7.4, 150mM NaCl, 0.02% sodium azide and 50% glycerol. Store at -20 °C. Stable for 12 months from date of receipt.	
Purification:	The antiserum was purified by peptide affinity chromatography using SulfoLink™ Coupling Resin (Thermo Fisher Scientific).	
Immunogen:	A synthesized peptide derived from human EPN1, corresponding to a region within the internal amino acids.	
Uniprot:	Q9Y6I3	
Description:	EPN1 is an endocytic accessory protein that interacts with EPS15 (MIM 600051), the alpha subunit of the clathrin adaptor AP2 (AP2A1; MIM 601026), and clathrin (see MIM 118960), as well as with other accessory proteins for the endocytosis of clathrin-coated vesicles. [supplied by OMIM]	



Western blot analysis on K562 cell lysates using EPN1 Ab. The lane on the left was treated with the antigen-specific peptide.

**IMPORTANT:** For western blot, incubate membrane with diluted primary Ab in 5% w/v milk, 1X TBS, 0.1% Tween@20 at 4°C with gentle shaking, overnight.

For Research Use Only. Not for use in diagnostic and therapeutic procedures. Not for resale without express authorization.