

## Phospho-HER3/ErbB3 (Tyr1289) Ab

[References\(2\)](#) [Images\(4\)](#)

Cat.#: DF7597  
Size:

Concn.: ~1mg/ml  
Source: Rabbit

Mol.Wt.: 185 kDa  
Clonality: Polyclonal

Application:

WB 1:1000-3000, IHC 1:50-1:200, IF/ICC 1:100-1:500

\*The optimal dilutions should be determined by the end user.

Reactivity:

Human, Mouse, Rat

Storage:

Rabbit IgG in phosphate buffered saline, pH 7.4, 150mM NaCl, 0.02% sodium azide and 50% glycerol. Store at -20 °C. Stable for 12 months from date of receipt.

Purification:

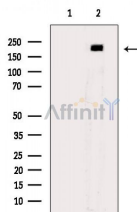
The Ab is from purified rabbit serum by affinity purification via sequential chromatography on phospho-peptide and non-phospho-peptide affinity columns.

Immunogen:

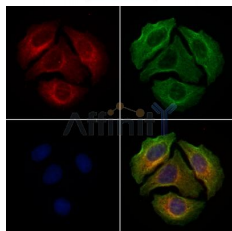
A synthesized peptide derived from human ERBB3 around the phosphorylation site of Tyr1289.

Uniprot:

P21860



Western blot analysis of extracts from A549 cells, using Phospho-HER3/ErbB3 (Tyr1289) Ab. The lane on the left was treated with blocking peptide.



DF7597 staining HeLa cells (4h of LPS treatment) by IF/ICC. The samples were fixed with PFA and permeabilized in 0.1% Triton X-100, then blocked in 10% serum for 45 minutes at 25°C. Samples were then incubated with primary Ab (DF7597 1:200) and mouse anti-beta tubulin Ab (T0023 1:200) for 1 hour at 37°C. An AlexaFluor594 conjugated goat anti-rabbit IgG(H+L) Ab (Red) and an AlexaFluor488 conjugated goat anti-mouse IgG(H+L) Ab (Green) were used as the secondary Ab.

The nuclear counter stain is DAPI (blue).

**IMPORTANT:** For western blot, incubate membrane with diluted primary Ab in 5% w/v milk, 1X TBS, 0.1% Tween@20 at 4°C with gentle shaking, overnight.

For Research Use Only. Not for use in diagnostic and therapeutic procedures. Not for resale without express authorization.