

## TMX2 Ab

Images(4)

|               |                 |                       |
|---------------|-----------------|-----------------------|
| Cat.#: DF7629 | Concn.: ~1mg/ml | Mol.Wt.: 34 kDa       |
| Size:         | Source: Rabbit  | Clonality: Polyclonal |

Application: WB 1:1000-3000, IHC 1:50-1:200  
\*The optimal dilutions should be determined by the end user.

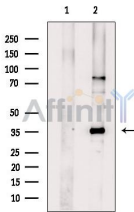
Reactivity: Human,Mouse

Storage: Rabbit IgG in phosphate buffered saline , pH 7.4, 150mM NaCl, 0.02% sodium azide and 50% glycerol. Store at -20 °C. Stable for 12 months from date of receipt.

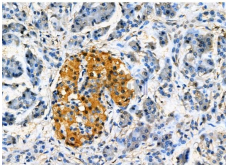
Purification: The antiserum was purified by peptide affinity chromatography using SulfoLink™ Coupling Resin (Thermo Fisher Scientific).

Immunogen: A synthesized peptide derived from human TMX2, corresponding to a region within N-terminal amino acids.

Uniprot: Q9Y320



Western blot analysis of extracts from Hela cells, using TMX2 Ab. The lane on the left was treated with blocking peptide.



DF7629 at 1/100 staining Human pancreatic cancer and adjacent normal tissues by IHC-P. The sample was formaldehyde fixed and a heat mediated antigen retrieval step in citrate buffer was performed. The sample was then blocked and incubated with the primary Ab at 4°C overnight. An HRP conjugated anti-Rabbit Ab was used as the secondary Ab.

**IMPORTANT:** For western blot, incubate membrane with diluted primary Ab in 5% w/v milk , 1X TBS, 0.1% Tween@20 at 4°C with gentle shaking, overnight.

For Research Use Only. Not for use in diagnostic and therapeutic procedures. Not for resale without express authorization.