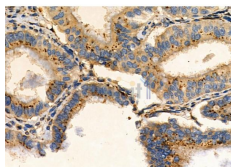


## GABRG1 Ab

[Images\(2\)](#)

|               |   |                       |
|---------------|---|-----------------------|
| Cat.#: AF0760 | Concn.: ~1mg/ml   | Mol.Wt.: 54kDa        |
| Size:         | Source: Rabbit  | Clonality: Polyclonal |
| Application:  | WB 1:500-1:2000, IF/ICC 1:100-1:500, IHC 1:50-1:200<br>*The optimal dilutions should be determined by the end user.   |                       |
| Reactivity:   | Human,Mouse,Rat   |                       |
| Storage:      | Rabbit IgG in phosphate buffered saline , pH 7.4, 150mM NaCl, 0.02% sodium azide and 50% glycerol. Store at -20 °C. Stable for 12 months from date of receipt.  |                       |
| Purification: | The antiserum was purified by peptide affinity chromatography using SulfoLink™ Coupling Resin (Thermo Fisher Scientific).   |                       |
| Immunogen:    | A synthesized peptide derived from human GABRG1, corresponding to a region within N-terminal amino acids.   |                       |
| Uniprot:      | Q8N1C3  |                       |
| Description:  | The protein encoded by this gene belongs to the ligand-gated ionic channel family. It is an integral membrane protein and plays an important role in inhibiting neurotransmission by binding to the benzodiazepine receptor and opening an integral chloride channel. This gene is clustered with three other family members on chromosome 4. |                       |



AF0760 at 1/100 staining Human ovarian cancer by IHC-P. The sample was formaldehyde fixed and a heat mediated antigen retrieval step in citrate buffer was performed. The sample was then blocked and incubated with the primary Ab at 4°C overnight. An HRP conjugated anti-Rabbit Ab was used as the secondary Ab.

**IMPORTANT:** For western blot, incubate membrane with diluted primary Ab in 5% w/v milk , 1X TBS, 0.1% Tween@20 at 4°C with gentle shaking, overnight.

For Research Use Only. Not for use in diagnostic and therapeutic procedures. Not for resale without express authorization.