

## Histone H1 Ab

[Images\(1\)](#)

Cat.#: AF0876	Concn.: ~1mg/ml	Mol.Wt.: 21kDa
Size:	Source: Rabbit	Clonality: Polyclonal

Application: WB 1:500-1:2000, IF/ICC 1:100-1:500

\*The optimal dilutions should be determined by the end user.

Reactivity: Human, Rat

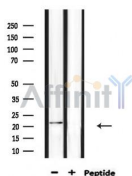
Storage: Rabbit IgG in phosphate buffered saline , pH 7.4, 150mM NaCl, 0.02% sodium azide and 50% glycerol. Store at -20 °C. Stable for 12 months from date of receipt.

Purification: The antiserum was purified by peptide affinity chromatography using SulfoLink™ Coupling Resin (Thermo Fisher Scientific).

Immunogen: A synthesized peptide derived from human Histone H1, corresponding to a region within the internal amino acids.

Uniprot: Q8IZA3

Description: H1FOO May play a key role in the control of gene expression during oogenesis and early embryogenesis, presumably through the perturbation of chromatin structure. Essential for meiotic maturation of germinal vesicle-stage oocytes. The somatic type linker histone H1c is rapidly replaced by H1oo in a donor nucleus transplanted into an oocyte. The greater mobility of H1oo as compared to H1c may contribute to this rapid replacement and increased instability of the embryonic chromatin structure. The rapid replacement of H1c with H1oo may play an important role in nuclear remodeling.



Western blot analysis of extracts from rat brain, using Histone H1 Ab.

**IMPORTANT:** For western blot, incubate membrane with diluted primary Ab in 5% w/v milk , 1X TBS, 0.1% Tween@20 at 4°C with gentle shaking, overnight.

For Research Use Only. Not for use in diagnostic and therapeutic procedures. Not for resale without express authorization.