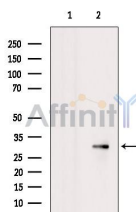


## NODAL Ab

[References\(2\)](#) [Images\(3\)](#)

|               |                 |                         |
|---------------|-----------------|-------------------------|
| Cat.#: DF7791 | Concn.: ~1mg/ml | Mol.Wt.: 40 kDa, 30 kDa |
| Size:         | Source: Rabbit  | Clonality: Polyclonal   |

|               |  |
|---------------|--|
| Application:  | WB 1:1000-3000<br>*The optimal dilutions should be determined by the end user.   |
| Reactivity:   | Human,Mouse,Rat  |
| Storage:      | Rabbit IgG in phosphate buffered saline , pH 7.4, 150mM NaCl, 0.02% sodium azide and 50% glycerol. Store at -20 °C. Stable for 12 months from date of receipt. |
| Purification: | The antiserum was purified by peptide affinity chromatography using SulfoLink™ Coupling Resin (Thermo Fisher Scientific).                                      |
| Immunogen:    | A synthesized peptide derived from human NODAL, corresponding to a region within the internal amino acids.   |
| Uniprot:      | Q96S42   |



Western blot analysis of extracts from C6 cells, using NODAL Ab. The lane on the left was treated with blocking peptide.

Observed bands: 30 kDa.

**IMPORTANT:** For western blot, incubate membrane with diluted primary Ab in 5% w/v milk , 1X TBS, 0.1% Tween@20 at 4°C with gentle shaking, overnight.

For Research Use Only. Not for use in diagnostic and therapeutic procedures. Not for resale without express authorization.