

FDX1 Ab

[References\(1\)](#) [Images\(1\)](#)

Cat.#: DF7950
Size:

Concn.: ~1mg/ml
Source: Rabbit

Mol.Wt.: 19 kDa
Clonality: Polyclonal

Application:

WB 1:1000-3000, IF/ICC 1:200-1:500

*The optimal dilutions should be determined by the end user.

Reactivity:

Human

Storage:

Rabbit IgG in phosphate buffered saline , pH 7.4, 150mM NaCl, 0.02% sodium azide and 50% glycerol. Store at -20 °C. Stable for 12 months from date of receipt.

Purification:

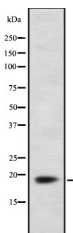
The antiserum was purified by peptide affinity chromatography using SulfoLink™ Coupling Resin (Thermo Fisher Scientific).

Immunogen:

A synthesized peptide derived from human FDX1, corresponding to a region within the internal amino acids.

Uniprot:

P10109



Western blot analysis of FDX1 using HepG2 whole lysates.

IMPORTANT: For western blot, incubate membrane with diluted primary Ab in 5% w/v milk , 1X TBS, 0.1% Tween@20 at 4°C with gentle shaking, overnight.

For Research Use Only. Not for use in diagnostic and therapeutic procedures. Not for resale without express authorization.