

ORAI1 Ab

[References\(1\)](#) [Images\(9\)](#)

Cat.#: DF7956	Concn.: ~1mg/ml	Mol.Wt.: 50 kDa, 60kDa
Size:	Source: Rabbit	Clonality: Polyclonal

Application: WB 1:1000-3000, IHC 1:50-1:200

*The optimal dilutions should be determined by the end user.

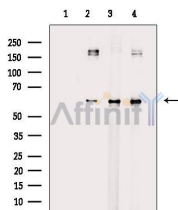
Reactivity: Human, Mouse, Rat

Storage: Rabbit IgG in phosphate buffered saline, pH 7.4, 150mM NaCl, 0.02% sodium azide and 50% glycerol. Store at -20 °C. Stable for 12 months from date of receipt.

Purification: The antiserum was purified by peptide affinity chromatography using SulfoLink™ Coupling Resin (Thermo Fisher Scientific).

Immunogen: A synthesized peptide derived from human ORAI1, corresponding to a region within C-terminal amino acids.

Uniprot: Q96D31



Western blot analysis of extracts from various samples, using ORAI1 Ab.

Lane 1: Rat lung, treated with blocking peptide;

Lane 2: Rat lung;

Lane 3: HepG2 cells;

Lane 4: MCF7.

Observed bands: 60 kDa.



DF7956 at 1/100 staining Mouse brain tissue by IHC-P. The sample was formaldehyde fixed and a heat mediated antigen retrieval step in citrate buffer was performed. The sample was then blocked and incubated with the primary Ab at 4°C overnight. An HRP conjugated anti-Rabbit Ab was used as the secondary Ab.

IMPORTANT: For western blot, incubate membrane with diluted primary Ab in 5% w/v milk, 1X TBS, 0.1% Tween@20 at 4°C with gentle shaking, overnight.

For Research Use Only. Not for use in diagnostic and therapeutic procedures. Not for resale without express authorization.