

MXD3 Ab

[Images\(3\)](#)

Cat.#: DF7986	Concn.: ~1mg/ml	Mol.Wt.: 23 kDa
Size:	Source: Rabbit	Clonality: Polyclonal

Application: WB 1:1000-3000, IHC 1:50-1:200
*The optimal dilutions should be determined by the end user.

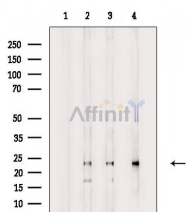
Reactivity: Human, Mouse

Storage: Rabbit IgG in phosphate buffered saline , pH 7.4, 150mM NaCl, 0.02% sodium azide and 50% glycerol. Store at -20 °C. Stable for 12 months from date of receipt.

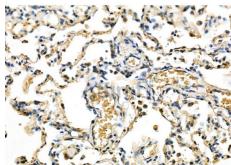
Purification: The antiserum was purified by peptide affinity chromatography using SulfoLink™ Coupling Resin (Thermo Fisher Scientific).

Immunogen: A synthesized peptide derived from human MXD3, corresponding to a region within the internal amino acids.

Uniprot: Q9BW11



Western blot analysis of extracts from various samples, using MXD3 Ab.
Lane 1: HepG2 cells (serum starvation treatment), blocked with antigen-specific peptides,
Lane 2: HepG2 cells (serum starvation treatment),
Lane 3: RAW264.7 cells (heat shock treatment),
Lane 4: A549 cells (heat shock treatment).



DF7986 at 1/100 staining Human lung cancer and para-carcinoma tissue by IHC-P. The sample was formaldehyde fixed and a heat mediated antigen retrieval step in citrate buffer was performed. The sample was then blocked and incubated with the primary Ab at 4°C overnight. An HRP conjugated anti-Rabbit Ab was used as the secondary Ab.

IMPORTANT: For western blot, incubate membrane with diluted primary Ab in 5% w/v milk , 1X TBS, 0.1% Tween@20 at 4°C with gentle shaking, overnight.

For Research Use Only. Not for use in diagnostic and therapeutic procedures. Not for resale without express authorization.