

USP10 Ab

[Images\(6\)](#)

Cat.#: DF8061	Concn.: ~1mg/ml	Mol.Wt.: 87kDa,130kDa
Size:	Source: Rabbit	Clonality: Polyclonal

Application: WB 1:1000-3000, IHC 1:50-1:200

*The optimal dilutions should be determined by the end user.

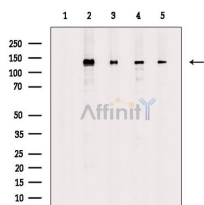
Reactivity: Human, Mouse, Rat

Storage: Rabbit IgG in phosphate buffered saline, pH 7.4, 150mM NaCl, 0.02% sodium azide and 50% glycerol. Store at -20 °C. Stable for 12 months from date of receipt.

Purification: The antiserum was purified by peptide affinity chromatography using SulfoLink™ Coupling Resin (Thermo Fisher Scientific).

Immunogen: A synthesized peptide derived from human USP10, corresponding to a region within N-terminal amino acids.

Uniprot: Q14694



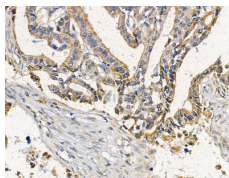
Western blot analysis of extracts from various samples, using USP10 Ab. Lane 1: HepG2 cells (serum starvation treatment), blocked with antigen-specific peptides,

Lane 2: HepG2 cells (serum starvation treatment),

Lane 3: PC12 (H2O2 treatment),

Lane 4: RAW264.7 cells (heat shock treatment),

Lane 5: A549 cells (heat shock treatment).



DF8061 at 1/100 staining human liver cancer by IHC-P. The sample was formaldehyde fixed and a heat mediated antigen retrieval step in citrate buffer was performed. The sample was then blocked and incubated with the primary Ab at 4°C overnight. An HRP conjugated anti-rabbit Ab was used as the secondary Ab.

IMPORTANT: For western blot, incubate membrane with diluted primary Ab in 5% w/v milk, 1X TBS, 0.1% Tween@20 at 4°C with gentle shaking, overnight.

For Research Use Only. Not for use in diagnostic and therapeutic procedures. Not for resale without express authorization.