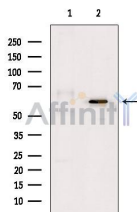


Phospho-PDPK1 (Ser241) Ab

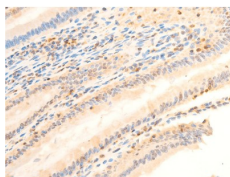
[References\(3\)](#) [Images\(15\)](#)

Cat.#: AF3018	Concn.: ~1mg/ml	Mol.Wt.: 63kDa
Size:	Source: Rabbit	Clonality: Polyclonal

Application:	WB 1:500-1:2000, IHC 1:50-1:500 *The optimal dilutions should be determined by the end user.
Reactivity:	Human, Mouse, Rat
Storage:	Rabbit IgG in phosphate buffered saline, pH 7.4, 150mM NaCl, 0.02% sodium azide and 50% glycerol. Store at -20 °C. Stable for 12 months from date of receipt.
Purification:	The Ab is from purified rabbit serum by affinity purification via sequential chromatography on phospho-peptide and non-phospho-peptide affinity columns.
Immunogen:	A synthesized peptide derived from human PDPK1 around the phosphorylation site of Ser241.
Uniprot:	O15530
Description:	PDK1 an AGC kinase of the PKB family that contains a PH domain. Involved in a wide variety of processes including cell proliferation, differentiation and apoptosis. Autophosphorylation in the activation loop is necessary for activity.



Western blot analysis of extracts from UV treated MDA-MB-231 cells, using Phospho-PDK1 (Ser241) Ab. The lane on the left was treated with blocking peptide.



AF3018 at 1/100 staining rat intestinal tissue sections by IHC-P. The tissue was formaldehyde fixed and a heat mediated antigen retrieval step in citrate buffer was performed. The tissue was then blocked and incubated with the Ab for 1.5 hours at 22°C. An HRP conjugated goat anti-rabbit Ab was used as the secondary Ab.

IMPORTANT: For western blot, incubate membrane with diluted primary Ab in 5% w/v milk, 1X TBS, 0.1% Tween@20 at 4°C with gentle shaking,

overnight.

For Research Use Only. Not for use in diagnostic and therapeutic procedures. Not for resale without express authorization.