

SOCS2 Ab

[Images\(3\)](#)

Cat.#: DF8133	Concn.: ~1mg/ml	Mol.Wt.: 23 kDa
Size:	Source: Rabbit	Clonality: Polyclonal

Application: WB 1:1000-3000, IF/ICC 1:200-1:500
*The optimal dilutions should be determined by the end user.

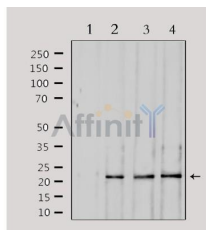
Reactivity: Human, Mouse, Rat, Monkey

Storage: Rabbit IgG in phosphate buffered saline, pH 7.4, 150mM NaCl, 0.02% sodium azide and 50% glycerol. Store at -20 °C. Stable for 12 months from date of receipt.

Purification: The antiserum was purified by peptide affinity chromatography using SulfoLink™ Coupling Resin (Thermo Fisher Scientific).

Immunogen: A synthesized peptide derived from human SOCS2, corresponding to a region within C-terminal amino acids.

Uniprot: O14508



Western blot analysis of extracts from various samples, using SOCS2 Ab.
Lane 1: 293 treated with blocking peptide; Lane 2: 293; Lane 3: mouse brain;
Lane 4: hela;

IMPORTANT: For western blot, incubate membrane with diluted primary Ab in 5% w/v milk, 1X TBS, 0.1% Tween@20 at 4°C with gentle shaking, overnight.

For Research Use Only. Not for use in diagnostic and therapeutic procedures. Not for resale without express authorization.