

Phospho-NR3C1 (Ser226) Ab

[Images\(10\)](#)

Cat.#: AF3066	Concn.: ~1mg/ml	Mol.Wt.: 86kDa
Size:	Source: Rabbit	Clonality: Polyclonal

Application: WB 1:500-1:2000, IHC 1:50-1:200, IF/ICC 1:100-1:500
*The optimal dilutions should be determined by the end user.

Reactivity: Human,Mouse,Rat

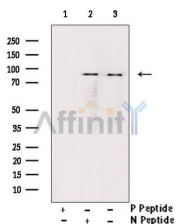
Storage: Rabbit IgG in phosphate buffered saline , pH 7.4, 150mM NaCl, 0.02% sodium azide and 50% glycerol. Store at -20 °C. Stable for 12 months from date of receipt.

Purification: The Ab is from purified rabbit serum by affinity purification via sequential chromatography on phospho-peptide and non-phospho-peptide affinity columns.

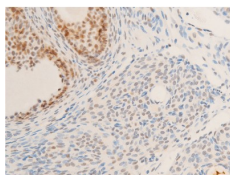
Immunogen: A synthesized peptide derived from human NR3C1 around the phosphorylation site of Ser226.

Uniprot: P04150

Description: The protein encoded by this gene is a receptor for glucocorticoids and can act as both a transcription factor and a regulator of other transcription factors. The encoded protein can bind DNA as a homodimer or as a heterodimer with another protein such as the retinoid X receptor. This protein can also be found in heteromeric cytoplasmic complexes along with heat shock factors and immunophilins.



Western blot analysis of GR phosphorylation expression in EGF treated rat brain tissue lysates, The lane on the right was treated with the antigen-specific peptide.



AF3066 at 1/100 staining rat ovarian tissue sections by IHC-P. The tissue was formaldehyde fixed and a heat mediated antigen retrieval step in citrate buffer was performed. The tissue was then blocked and incubated with the Ab for 1.5 hours at 22°C. An HRP conjugated goat anti-rabbit Ab was used as the secondary Ab.

IMPORTANT: For western blot, incubate membrane with diluted primary Ab in 5% w/v milk , 1X TBS, 0.1% Tween@20 at 4°C with gentle shaking, overnight.

For Research Use Only. Not for use in diagnostic and therapeutic procedures. Not for resale without express authorization.