

S100A2 Ab

[Images\(2\)](#)

Cat.#: DF8225	Concn.: ~1mg/ml	Mol.Wt.: 11 kDa
Size:	Source: Rabbit	Clonality: Polyclonal

Application: WB 1:1000-3000, IHC 1:50-1:200

*The optimal dilutions should be determined by the end user.

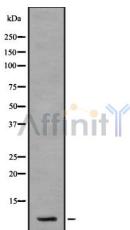
Reactivity: Human, Rat

Storage: Rabbit IgG in phosphate buffered saline , pH 7.4, 150mM NaCl, 0.02% sodium azide and 50% glycerol. Store at -20 °C. Stable for 12 months from date of receipt.

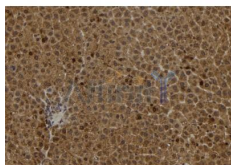
Purification: The antiserum was purified by peptide affinity chromatography using SulfoLink™ Coupling Resin (Thermo Fisher Scientific).

Immunogen: A synthesized peptide derived from human S100A2, corresponding to a region within the internal amino acids.

Uniprot: P29034



Western blot analysis S100A2 using HT29 whole cell lysates



DF8225 at 1/100 staining Rat liver tissue by IHC-P. The sample was formaldehyde fixed and a heat mediated antigen retrieval step in citrate buffer was performed. The sample was then blocked and incubated with the Ab for 1.5 hours at 22°C. An HRP conjugated goat anti-rabbit Ab was used as the secondary Ab.

IMPORTANT: For western blot, incubate membrane with diluted primary Ab in 5% w/v milk , 1X TBS, 0.1% Tween@20 at 4°C with gentle shaking, overnight.

For Research Use Only. Not for use in diagnostic and therapeutic procedures. Not for resale without express authorization.