

Integrin beta 5 Ab

[References\(1\)](#) [Images\(8\)](#)

Cat.#: AF0185
Size:

Concn.: ~1mg/ml
Source: Rabbit

Mol.Wt.: 100,130kD
Clonality: Polyclonal

Application:

WB 1:500-1:3000, IF/ICC 1:100-1:500, IHC 1:50-1:200
*The optimal dilutions should be determined by the end user.

Reactivity:

Human, Mouse, Rat

Storage:

Rabbit IgG in phosphate buffered saline, pH 7.4, 150mM NaCl, 0.02% sodium azide and 50% glycerol. Store at -20 °C. Stable for 12 months from date of receipt.

Purification:

The antiserum was purified by peptide affinity chromatography using SulfoLink™ Coupling Resin (Thermo Fisher Scientific).

Immunogen:

A synthesized peptide derived from human Integrin beta 5, corresponding to a region within C-terminal amino acids.

Uniprot:

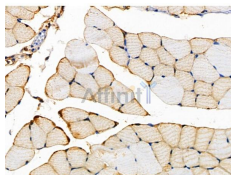
P18084

Description:

ITGB5 Integrin alpha-V/beta-5 is a receptor for fibronectin. It recognizes the sequence R-G-D in its ligand. Belongs to the integrin beta chain family. Heterodimer of an alpha and a beta subunit. Beta-5 associates with alpha-V.



Western blot analysis on mouse brain lysates using Integrin beta-5 Ab.



AF0185 at 1/100 staining Mouse muscle tissue by IHC-P. The sample was formaldehyde fixed and a heat mediated antigen retrieval step in citrate buffer was performed. The sample was then blocked and incubated with the primary Ab at 4°C overnight. An HRP conjugated anti-Rabbit Ab was used as the secondary Ab.

IMPORTANT: For western blot, incubate membrane with diluted primary Ab in 5% w/v milk, 1X TBS, 0.1% Tween@20 at 4°C with gentle shaking, overnight.



Affinity Biosciences

website: www.affbiotech.com

order: order@affbiotech.com

For Research Use Only. Not for use in diagnostic and therapeutic procedures. Not for resale without express authorization.