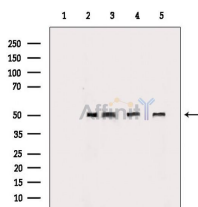


## ENT1 Ab

[References\(1\)](#) [Images\(6\)](#)

Cat.#: DF8542	Concn.: ~1mg/ml	Mol.Wt.: 50 kDa
Size:	Source: Rabbit	Clonality: Polyclonal
Application:	WB 1:1000-3000, IHC 1:50-1:200 *The optimal dilutions should be determined by the end user.	
Reactivity:	Human, Mouse, Rat	
Storage:	Rabbit IgG in phosphate buffered saline, pH 7.4, 150mM NaCl, 0.02% sodium azide and 50% glycerol. Store at -20 °C. Stable for 12 months from date of receipt.	
Purification:	The antiserum was purified by peptide affinity chromatography using SulfoLink™ Coupling Resin (Thermo Fisher Scientific).	
Immunogen:	A synthesized peptide derived from human ENT1, corresponding to a region within N-terminal amino acids.	
Uniprot:	Q99808	



Western blot analysis of extracts from various samples, using ENT1 Ab.

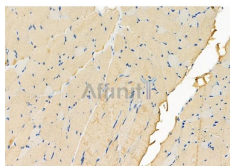
Lane 1: Mouse kidney, blocked with antigen-specific peptides,

Lane 2: Mouse kidney,

Lane 3: Mouse liver,

Lane 4: HepG2 cells(heat-shock treatment),

Lane 5: Hela cells.



DF8542 at 1/100 staining Rat skin tissue by IHC-P. The sample was formaldehyde fixed and a heat mediated antigen retrieval step in citrate buffer was performed. The sample was then blocked and incubated with the primary Ab at 4°C overnight. An HRP conjugated anti-Rabbit Ab was used as the secondary Ab.

**IMPORTANT:** For western blot, incubate membrane with diluted primary Ab in 5% w/v milk, 1X TBS, 0.1% Tween@20 at 4°C with gentle shaking, overnight.

For Research Use Only. Not for use in diagnostic and therapeutic procedures. Not for resale without express authorization.