

FZD7 Ab

[References\(2\)](#) [Images\(4\)](#)

Cat.#: DF8657 Concn.: ~1mg/ml Mol.Wt.: 63 kDa
Size: Source: Rabbit Clonality: Polyclonal

Application: IHC 1:50-1:200, WB 1:1000-3000, IF/ICC 1:100-1:500
*The optimal dilutions should be determined by the end user.

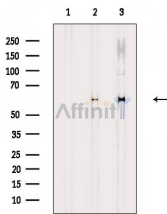
Reactivity: Human,Mouse,Rat

Storage: Rabbit IgG in phosphate buffered saline , pH 7.4, 150mM NaCl, 0.02% sodium azide and 50% glycerol. Store at -20 °C. Stable for 12 months from date of receipt.

Purification: The antiserum was purified by peptide affinity chromatography using SulfoLink™ Coupling Resin (Thermo Fisher Scientific).

Immunogen: A synthesized peptide derived from human FZD7, corresponding to a region within C-terminal amino acids.

Uniprot: O75084

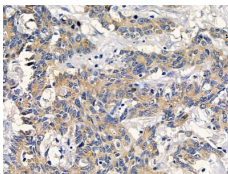


Western blot analysis of extracts from various samples, using FZD7 Ab.

Lane 1: Raji cells(serum starvation treatment), blocked with antigen-specific peptides,

Lane 2: Raji cells(serum starvation treatment),

Lane 3: Rat heart.



DF8657 at 1/100 staining human colorectal cancer by IHC-P. The sample was formaldehyde fixed and a heat mediated antigen retrieval step in citrate buffer was performed. The sample was then blocked and incubated with the primary Ab at 4°C overnight. An HRP conjugated anti-rabbit Ab was used as the secondary Ab.

IMPORTANT: For western blot, incubate membrane with diluted primary Ab in 5% w/v milk , 1X TBS, 0.1% Tween@20 at 4°C with gentle shaking, overnight.

For Research Use Only. Not for use in diagnostic and therapeutic procedures. Not for resale without express authorization.