

MRGX4 Ab

[Images\(2\)](#)

| | | |
|---------------|-----------------|-----------------------|
| Cat.#: DF8678 | Concn.: ~1mg/ml | Mol.Wt.: 36 kDa |
| Size: | Source: Rabbit | Clonality: Polyclonal |

Application: WB 1:1000-3000, IF/ICC 1:100-1:500
*The optimal dilutions should be determined by the end user.

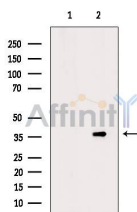
Reactivity: Human

Storage: Rabbit IgG in phosphate buffered saline , pH 7.4, 150mM NaCl, 0.02% sodium azide and 50% glycerol. Store at -20 °C. Stable for 12 months from date of receipt.

Purification: The antiserum was purified by peptide affinity chromatography using SulfoLink™ Coupling Resin (Thermo Fisher Scientific).

Immunogen: A synthesized peptide derived from human MRGX4, corresponding to a region within C-terminal amino acids.

Uniprot: Q96LA9



Western blot analysis of extracts from HeLa cells, using MRGX4 Ab. The lane on the left was treated with blocking peptide.

IMPORTANT: For western blot, incubate membrane with diluted primary Ab in 5% w/v milk , 1X TBS, 0.1% Tween@20 at 4°C with gentle shaking, overnight.

For Research Use Only. Not for use in diagnostic and therapeutic procedures. Not for resale without express authorization.