

OR2A5/2A14 Ab

[Images\(2\)](#)

Cat.#: DF8691	Concn.: ~1mg/ml	Mol.Wt.: 35 kDa
Size:	Source: Rabbit	Clonality: Polyclonal

Application: WB 1:1000-3000, IF/ICC 1:100-1:500
*The optimal dilutions should be determined by the end user.

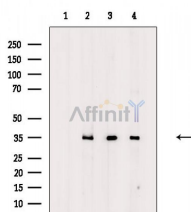
Reactivity: Human, Mouse, Rat

Storage: Rabbit IgG in phosphate buffered saline , pH 7.4, 150mM NaCl, 0.02% sodium azide and 50% glycerol. Store at -20 °C. Stable for 12 months from date of receipt.

Purification: The antiserum was purified by peptide affinity chromatography using SulfoLink™ Coupling Resin (Thermo Fisher Scientific).

Immunogen: A synthesized peptide derived from human OR2A5/2A14, corresponding to a region within C-terminal amino acids.

Uniprot: Q96R47/Q96R48



Western blot analysis of extracts from various samples, using OR2A5/2A14 Ab.

Lane 1: Rat liver, blocked with antigen-specific peptides,
Lane 2: Rat liver,
Lane 3: Mouse brain,
Lane 4: Rat brain.

IMPORTANT: For western blot, incubate membrane with diluted primary Ab in 5% w/v milk , 1X TBS, 0.1% Tween@20 at 4°C with gentle shaking, overnight.

For Research Use Only. Not for use in diagnostic and therapeutic procedures. Not for resale without express authorization.