

## Prostate Stem Cell Antigen Ab

[Images\(2\)](#)

|               |                 |                         |
|---------------|-----------------|-------------------------|
| Cat.#: DF8709 | Concn.: ~1mg/ml | Mol.Wt.: 12 kDa, 25 kDa |
| Size:         | Source: Rabbit  | Clonality: Polyclonal   |

**Application:** WB 1:1000-3000, IF/ICC 1:100-1:500  
\*The optimal dilutions should be determined by the end user.

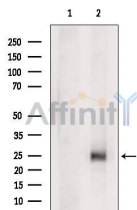
**Reactivity:** Human,Mouse,Rat

**Storage:** Rabbit IgG in phosphate buffered saline , pH 7.4, 150mM NaCl, 0.02% sodium azide and 50% glycerol. Store at -20 °C. Stable for 12 months from date of receipt.

**Purification:** The antiserum was purified by peptide affinity chromatography using SulfoLink™ Coupling Resin (Thermo Fisher Scientific).

**Immunogen:** A synthesized peptide derived from human Prostate Stem Cell Antigen, corresponding to a region within the internal amino acids.

**Uniprot:** O43653



Western blot analysis of extracts from Rat brain, using Prostate Stem Cell Antigen Ab. The lane on the left was treated with blocking peptide.

Observed bands: 25 kDa.

**IMPORTANT:** For western blot, incubate membrane with diluted primary Ab in 5% w/v milk , 1X TBS, 0.1% Tween@20 at 4°C with gentle shaking, overnight.

For Research Use Only. Not for use in diagnostic and therapeutic procedures. Not for resale without express authorization.