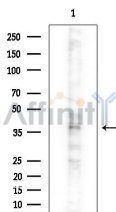


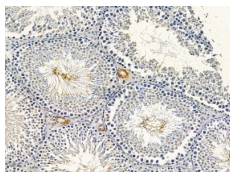
## RELT Ab

[Images\(3\)](#)

Cat.#: DF8712	Concn.: ~1mg/ml	Mol.Wt.: 46 kDa
Size:	Source: Rabbit	Clonality: Polyclonal
Application:	IHC 1:50-1:200, WB 1:1000-3000, IF/ICC 1:100-1:500 *The optimal dilutions should be determined by the end user.	
Reactivity:	Human, Mouse	
Storage:	Rabbit IgG in phosphate buffered saline , pH 7.4, 150mM NaCl, 0.02% sodium azide and 50% glycerol. Store at -20 °C. Stable for 12 months from date of receipt.	
Purification:	The antiserum was purified by peptide affinity chromatography using SulfoLink™ Coupling Resin (Thermo Fisher Scientific).	
Immunogen:	A synthesized peptide derived from human RELT, corresponding to a region within C-terminal amino acids.	
Uniprot:	Q969Z4	



Western blot analysis of extracts from Rat brain, using RELT Ab at 1/1000 dilution.  
Observed bands: 43kD.



DF8712 at 1/100 staining rat testis tissue by IHC-P. The sample was formaldehyde fixed and a heat mediated antigen retrieval step in citrate buffer was performed. The sample was then blocked and incubated with the primary Ab at 4°C overnight. An HRP conjugated anti-rabbit Ab was used as the secondary Ab.

**IMPORTANT:** For western blot, incubate membrane with diluted primary Ab in 5% w/v milk , 1X TBS, 0.1% Tween@20 at 4°C with gentle shaking, overnight.

For Research Use Only. Not for use in diagnostic and therapeutic procedures. Not for resale without express authorization.