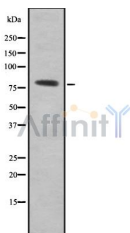


SDCCAG8 Ab

[Images\(1\)](#)

Cat.#: DF8846	Concn.: ~1mg/ml	Mol.Wt.: 83 kDa
Size:	Source: Rabbit	Clonality: Polyclonal

Application:	WB 1:1000-3000 *The optimal dilutions should be determined by the end user.
Reactivity:	Human, Mouse
Storage:	Rabbit IgG in phosphate buffered saline , pH 7.4, 150mM NaCl, 0.02% sodium azide and 50% glycerol. Store at -20 °C. Stable for 12 months from date of receipt.
Purification:	The antiserum was purified by peptide affinity chromatography using SulfoLink™ Coupling Resin (Thermo Fisher Scientific).
Immunogen:	A synthesized peptide derived from human SDCCAG8, corresponding to a region within the internal amino acids.
Uniprot:	Q86SQ7



Western blot analysis SDCCAG8 using COLO205 whole cell lysates

IMPORTANT: For western blot, incubate membrane with diluted primary Ab in 5% w/v milk , 1X TBS, 0.1% Tween@20 at 4°C with gentle shaking, overnight.

For Research Use Only. Not for use in diagnostic and therapeutic procedures. Not for resale without express authorization.