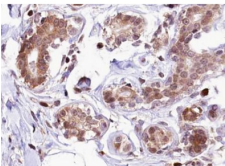


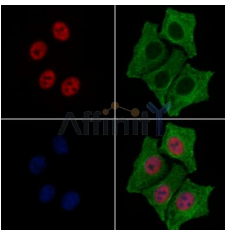
## Phospho-Estrogen Receptor alpha (Ser118) Ab

[References\(1\)](#) [Images\(4\)](#)

|               |   |                       |
|---------------|---|-----------------------|
| Cat.#: AF3061 | Concn.: ~1mg/ml   | Mol.Wt.: 66kDa        |
| Size:         | Source: Rabbit  | Clonality: Polyclonal |
| Application:  | WB 1:500-1:2000, IHC 1:50-1:200, IF/ICC 1:100-1:500<br>*The optimal dilutions should be determined by the end user.   |                       |
| Reactivity:   | Human,Mouse   |                       |
| Storage:      | Rabbit IgG in phosphate buffered saline , pH 7.4, 150mM NaCl, 0.02% sodium azide and 50% glycerol. Store at -20 °C. Stable for 12 months from date of receipt.  |                       |
| Purification: | The Ab is from purified rabbit serum by affinity purification via sequential chromatography on phospho-peptide and non-phospho-peptide affinity columns.  |                       |
| Immunogen:    | A synthesized peptide derived from human Estrogen Receptor- alpha around the phosphorylation site of Ser118.  |                       |
| Uniprot:      | P03372  |                       |
| Description:  | ER-alpha is a nuclear hormone receptor and transcription factor. Regulates gene expression and affects cellular proliferation and differentiation in target tissues. Two splice-variant isoforms have been described. |                       |



AF3061 at 1/100 staining human Breast carcinoma tissue sections by IHC-P. The tissue was formaldehyde fixed and a heat mediated antigen retrieval step in citrate buffer was performed. The tissue was then blocked and incubated with the Ab for 1.5 hours at 22°C. An HRP conjugated goat anti-rabbit Ab was used as the secondary Ab.



AF3061 staining HepG2 cells(4h of LPS treatment) by IF/ICC. The samples were fixed with PFA and permeabilized in 0.1% Triton X-100, then blocked in 10% serum for 45 minutes at 25°C. Samples were then incubated with primary Ab(AF3061 1:200) and mouse anti-beta tubulin Ab(T0023 1:200) for 1 hour at 37°C. An AlexaFluor594 conjugated goat anti-rabbit IgG(H+L) Ab(Red) and an AlexaFluor488 conjugated goat anti-mouse IgG(H+L) Ab(Green) were used as the secondary Ab. The nuclear counter stain is DAPI(blue).

**IMPORTANT:** For western blot, incubate membrane with diluted primary Ab in 5% w/v milk , 1X TBS, 0.1% Tween@20 at 4°C with gentle shaking, overnight.



**Affinity Biosciences**

website: [www.affbiotech.com](http://www.affbiotech.com)

order: [order@affbiotech.com](mailto:order@affbiotech.com)

---

For Research Use Only. Not for use in diagnostic and therapeutic procedures. Not for resale without express authorization.