

## Phospho-Glycogen Synthase (Ser645) Ab

[References\(1\)](#) [Images\(4\)](#)

Cat.#: AF3165	Concn.: ~1mg/ml	Mol.Wt.: 83,89kDa
Size:	Source: Rabbit	Clonality: Polyclonal

Application: WB 1:500-1:2000, IHC 1:50-1:200, IF/ICC 1:100-1:500  
\*The optimal dilutions should be determined by the end user.

Reactivity: Human, Mouse, Rat

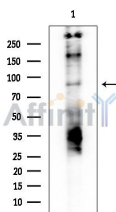
Storage: Rabbit IgG in phosphate buffered saline, pH 7.4, 150mM NaCl, 0.02% sodium azide and 50% glycerol. Store at -20 °C. Stable for 12 months from date of receipt.

Purification: The Ab is from purified rabbit serum by affinity purification via sequential chromatography on phospho-peptide and non-phospho-peptide affinity columns.

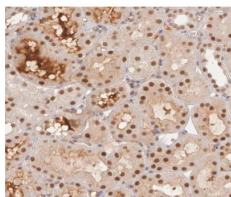
Immunogen: A synthesized peptide derived from human Glycogen Synthase around the phosphorylation site of Ser645.

Uniprot: P13807

Description: GYS1 muscle glycogen synthase 1. Transfers glucosyl residue from UDP-glucose to glycogen. Regulated allosterically by glucose-6-phosphate, and by PKA-mediated phosphorylation.



Western blot analysis of extracts from Rat brain, using Phospho-Glycogen Synthase (Ser645) Ab at 1/1000 dilution.  
Observed bands: 89kD.



AF3165 at 1/200 staining human kidney tissue sections by IHC-P. The tissue was formaldehyde fixed and a heat mediated antigen retrieval step in citrate buffer was performed. The tissue was then blocked and incubated with the Ab for 1.5 hours at 22°C. An HRP conjugated goat anti-rabbit Ab was used as the secondary Ab.

**IMPORTANT:** For western blot, incubate membrane with diluted primary Ab in 5% w/v milk, 1X TBS, 0.1% Tween@20 at 4°C with gentle shaking, overnight.



**Affinity Biosciences**

website: [www.affbiotech.com](http://www.affbiotech.com)

order: [order@affbiotech.com](mailto:order@affbiotech.com)

---

For Research Use Only. Not for use in diagnostic and therapeutic procedures. Not for resale without express authorization.