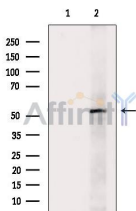


Phospho-Epo-R (Tyr368) Ab

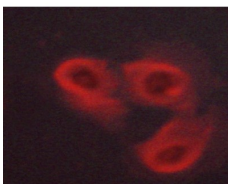
[Images\(3\)](#)

Cat.#: AF3211	Concn.: ~1mg/ml	Mol.Wt.: 55kDa
Size:	Source: Rabbit	Clonality: Polyclonal

Application:	WB 1:500-1:2000, IF/ICC 1:100-1:500 *The optimal dilutions should be determined by the end user.
Reactivity:	Human,Mouse,Rat
Storage:	Rabbit IgG in phosphate buffered saline , pH 7.4, 150mM NaCl, 0.02% sodium azide and 50% glycerol. Store at -20 °C. Stable for 12 months from date of receipt.
Purification:	The Ab is from purified rabbit serum by affinity purification via sequential chromatography on phospho-peptide and non-phospho-peptide affinity columns.
Immunogen:	A synthesized peptide derived from human Epo-R around the phosphorylation site of Tyr368.
Uniprot:	P19235
Description:	Erythropoiesis is regulated through the interaction of erythropoietin (Epo) with its receptor, EpoR, a member of the cytokine superfamily of receptors. The human EpoR is a 507 amino acid transmembrane protein that forms homodimers following erythropoietin activation and is related to the interleukin 2 (IL-2) receptor α chain subunit (IL-2R α).



Western blot analysis of extracts from H2O2 treated HepG2 cells, using Phospho-Epo-R (Tyr368) Ab. The lane on the left was treated with blocking peptide.



AF3211 staining HepG2 cells by ICC/IF. Cells were fixed with PFA and permeabilized in 0.1% saponin prior to blocking in 10% serum for 45 minutes at 37°C. The primary Ab was diluted 1/400 and incubated with the sample for 1 hour at 37°C. A Alexa Fluor 594 conjugated goat polyclonal to rabbit IgG (H+L), diluted 1/600 was used as secondary Ab.

IMPORTANT: For western blot, incubate membrane with diluted primary Ab

in 5% w/v milk , 1X TBS, 0.1% Tween@20 at 4°C with gentle shaking,
overnight.

For Research Use Only. Not for use in diagnostic and therapeutic
procedures. Not for resale without express authorization.