

## CTNNAL1 Ab

[Images\(2\)](#)

Cat.#: DF9195	Concn.: ~1mg/ml	Mol.Wt.: 82 kDa
Size:	Source: Rabbit	Clonality: Polyclonal

**Application:** WB 1:1000-3000, IHC 1:50-1:200  
\*The optimal dilutions should be determined by the end user.

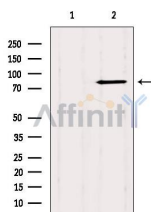
**Reactivity:** Human, Mouse, Rat

**Storage:** Rabbit IgG in phosphate buffered saline, pH 7.4, 150mM NaCl, 0.02% sodium azide and 50% glycerol. Store at -20 °C. Stable for 12 months from date of receipt.

**Purification:** The antiserum was purified by peptide affinity chromatography using SulfoLink™ Coupling Resin (Thermo Fisher Scientific).

**Immunogen:** A synthesized peptide derived from human CTNNAL1, corresponding to a region within the internal amino acids.

**Uniprot:** Q9UBT7



Western blot analysis of extracts from Mouse brain, using CTNNAL1 Ab. Lane 1 was treated with the blocking peptide.

**IMPORTANT:** For western blot, incubate membrane with diluted primary Ab in 5% w/v milk, 1X TBS, 0.1% Tween@20 at 4°C with gentle shaking, overnight.

For Research Use Only. Not for use in diagnostic and therapeutic procedures. Not for resale without express authorization.