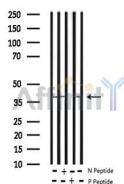


Phospho-c-Jun (Ser73) Ab

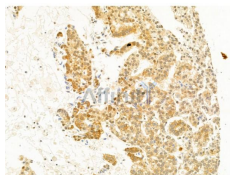
[References\(27\)](#) [Images\(23\)](#)

Cat.#: AF3095	Concn.: ~1mg/ml	Mol.Wt.: 37kDa
Size:	Source: Rabbit	Clonality: Polyclonal

Application:	WB 1:500-1:2000, IHC 1:50-1:200, IF/ICC 1:100-1:500 *The optimal dilutions should be determined by the end user.
Reactivity:	Human, Mouse, Rat, Zebrafish
Storage:	Rabbit IgG in phosphate buffered saline, pH 7.4, 150mM NaCl, 0.02% sodium azide and 50% glycerol. Store at -20 °C. Stable for 12 months from date of receipt.
Purification:	The Ab is from purified rabbit serum by affinity purification via sequential chromatography on phospho-peptide and non-phospho-peptide affinity columns.
Immunogen:	A synthesized peptide derived from human c-Jun around the phosphorylation site of Ser73.
Uniprot:	P05412/P17535
Description:	JunD Transcription factor binding AP-1 sites. Binds DNA as a dimer. Interacts with MEN1; this interaction represses transcriptional activation.



Western blot analysis of extracts from mouse kidney/rat lung, using Phospho-c-Jun (Ser73) Ab.
-/+ means absence or presence of N peptide(non-phospho peptide) and P peptide(phospho peptide)



AF3095 at 1/100 staining Human lung cancer by IHC-P. The sample was formaldehyde fixed and a heat mediated antigen retrieval step in citrate buffer was performed. The sample was then blocked and incubated with the primary Ab at 4°C overnight. An HRP conjugated anti-Rabbit Ab was used as the secondary Ab.

IMPORTANT: For western blot, incubate membrane with diluted primary Ab in 5% w/v milk, 1X TBS, 0.1% Tween@20 at 4°C with gentle shaking, overnight.



Affinity Biosciences

website: www.affbiotech.com

order: order@affbiotech.com

For Research Use Only. Not for use in diagnostic and therapeutic procedures. Not for resale without express authorization.