

CALML5 Ab

[References\(1\)](#) [Images\(1\)](#)

Cat.#: DF9316	Concn.: ~1mg/ml	Mol.Wt.: 16 kDa
Size:	Source: Rabbit	Clonality: Polyclonal

Application: WB 1:1000-3000, IHC 1:50-1:200

*The optimal dilutions should be determined by the end user.

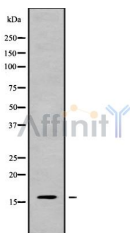
Reactivity: Human, Rat

Storage: Rabbit IgG in phosphate buffered saline , pH 7.4, 150mM NaCl, 0.02% sodium azide and 50% glycerol. Store at -20 °C. Stable for 12 months from date of receipt.

Purification: The antiserum was purified by peptide affinity chromatography using SulfoLink™ Coupling Resin (Thermo Fisher Scientific).

Immunogen: A synthesized peptide derived from human CALML5, corresponding to a region within the internal amino acids.

Uniprot: Q9NZT1



Western blot analysis of CALML5 using MCF7 whole cell lysates

IMPORTANT: For western blot, incubate membrane with diluted primary Ab in 5% w/v milk , 1X TBS, 0.1% Tween@20 at 4°C with gentle shaking, overnight.

For Research Use Only. Not for use in diagnostic and therapeutic procedures. Not for resale without express authorization.