

Phospho-ATP1A1 (Ser23) Ab

[Images\(3\)](#)

Cat.#: AF3109
Size:

Concn.: ~1mg/ml
Source: Rabbit

Mol.Wt.: 113kDa
Clonality: Polyclonal

Application:

WB 1:500-1:2000, IF/ICC 1:100-1:500

*The optimal dilutions should be determined by the end user.

Reactivity:

Human, Mouse, Rat

Storage:

Rabbit IgG in phosphate buffered saline, pH 7.4, 150mM NaCl, 0.02% sodium azide and 50% glycerol. Store at -20 °C. Stable for 12 months from date of receipt.

Purification:

The Ab is from purified rabbit serum by affinity purification via sequential chromatography on phospho-peptide and non-phospho-peptide affinity columns.

Immunogen:

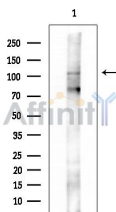
A synthesized peptide derived from rat ATP1 alpha1/Na+K+ ATPase1 around the phosphorylation site of Ser23.

Uniprot:

P05023

Description:

ATP1A1 the catalytic component of the active enzyme, which catalyzes the hydrolysis of ATP coupled with the exchange of Na and K ions across the plasma membrane. This action creates the electrochemical gradient of Na and K, providing the energy for active transport of various nutrients.



Western blot analysis of extracts from COLO205 cells (heat-shock treatment), using Phospho-ATP1A1 (Ser23) Ab at 1/1000 dilution.
Observed bands: 110kD.



AF3109 staining PC-12 cells treated with TPA by ICC/IF. Cells were fixed with PFA and permeabilized in 0.1% saponin prior to blocking in 10% serum for 45 minutes at 37°C. The primary Ab was diluted 1/400 and incubated with the sample for 1 hour at 37°C. A Alexa Fluor® 594 conjugated goat polyclonal to rabbit IgG (H+L), diluted 1/600 was used as secondary Ab.

IMPORTANT: For western blot, incubate membrane with diluted primary Ab in 5% w/v milk, 1X TBS, 0.1% Tween@20 at 4°C with gentle shaking,

overnight.

For Research Use Only. Not for use in diagnostic and therapeutic procedures. Not for resale without express authorization.