

Phospho-Lyn (Tyr508) Ab

[References\(2\)](#) [Images\(16\)](#)

Cat.#: AF3119	Concn.: ~1mg/ml	Mol.Wt.: 53,56kDa
Size:	Source: Rabbit	Clonality: Polyclonal

Application: WB 1:500-1:2000, IHC 1:50-1:200, IF/ICC 1:100-1:500
*The optimal dilutions should be determined by the end user.

Reactivity: Human, Mouse, Rat

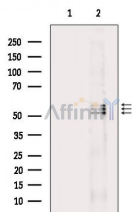
Storage: Rabbit IgG in phosphate buffered saline, pH 7.4, 150mM NaCl, 0.02% sodium azide and 50% glycerol. Store at -20 °C. Stable for 12 months from date of receipt.

Purification: The Ab is from purified rabbit serum by affinity purification via sequential chromatography on phospho-peptide and non-phospho-peptide affinity columns.

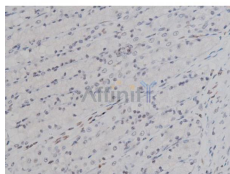
Immunogen: A synthesized peptide derived from human Lyn around the phosphorylation site of Tyr507.

Uniprot: P07948

Description: Lyn a tyrosine kinase of the Src family that plays a role in B cell antigen-receptor signaling.



Western blot analysis of extracts from RAW264.7 cells, using Phospho-Lyn (Tyr508) Ab. The lane on the left was treated with blocking peptide.



AF3119 at 1/200 staining Rat gastric tissue sections by IHC-P. The tissue was formaldehyde fixed and a heat mediated antigen retrieval step in citrate buffer was performed. The tissue was then blocked and incubated with the Ab for 1.5 hours at 22°C. An HRP conjugated goat anti-rabbit Ab was used as the secondary Ab.

IMPORTANT: For western blot, incubate membrane with diluted primary Ab in 5% w/v milk, 1X TBS, 0.1% Tween@20 at 4°C with gentle shaking, overnight.



Affinity Biosciences

website: www.affbiotech.com

order: order@affbiotech.com

For Research Use Only. Not for use in diagnostic and therapeutic procedures. Not for resale without express authorization.