

GON4L Ab

[Images\(3\)](#)

| | | |
|---------------|-----------------|-----------------------|
| Cat.#: DF9537 | Concn.: ~1mg/ml | Mol.Wt.: 249 kDa |
| Size: | Source: Rabbit | Clonality: Polyclonal |

Application: WB 1:1000-3000, IHC 1:50-1:200
*The optimal dilutions should be determined by the end user.

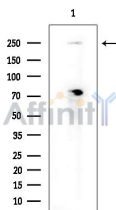
Reactivity: Human, Rat

Storage: Rabbit IgG in phosphate buffered saline , pH 7.4, 150mM NaCl, 0.02% sodium azide and 50% glycerol. Store at -20 °C. Stable for 12 months from date of receipt.

Purification: The antiserum was purified by peptide affinity chromatography using SulfoLink™ Coupling Resin (Thermo Fisher Scientific).

Immunogen: A synthesized peptide derived from human GON4L, corresponding to a region within N-terminal amino acids.

Uniprot: Q3T8J9



Western blot analysis of extracts from COLO205 cells(heat-shock treatment), using GON4L Ab at 1/1000 dilution.
Observed bands:250kD.



DF9537 at 1/100 staining Rat brain tissue by IHC-P. The sample was formaldehyde fixed and a heat mediated antigen retrieval step in citrate buffer was performed. The sample was then blocked and incubated with the Ab for 1.5 hours at 22°C. An HRP conjugated goat anti-rabbit Ab was used as the secondary Ab.

IMPORTANT: For western blot, incubate membrane with diluted primary Ab in 5% w/v milk , 1X TBS, 0.1% Tween@20 at 4°C with gentle shaking, overnight.

For Research Use Only. Not for use in diagnostic and therapeutic procedures. Not for resale without express authorization.