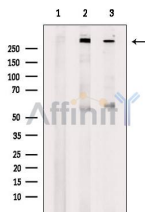


## MUC5A Ab

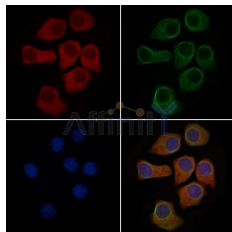
[References\(2\)](#) [Images\(6\)](#)

Cat.#: DF9639	Concn.: ~1mg/ml	Mol.Wt.: 586kDa
Size:	Source: Rabbit	Clonality: Polyclonal

Application:	WB 1:1000-3000, IF/ICC 1:100-1:500 *The optimal dilutions should be determined by the end user.
Reactivity:	Human,Rat
Storage:	Rabbit IgG in phosphate buffered saline , pH 7.4, 150mM NaCl, 0.02% sodium azide and 50% glycerol. Store at -20 °C. Stable for 12 months from date of receipt.
Purification:	The antiserum was purified by peptide affinity chromatography using SulfoLink™ Coupling Resin (Thermo Fisher Scientific).
Immunogen:	A synthesized peptide derived from human MUC5A, corresponding to a region within C-terminal amino acids.
Uniprot:	P98088



Western blot analysis of extracts from various samples, using MUC5A Ab.  
Lane 1: MCF7 lysates treated with blocking peptide;  
Lane 2: MCF7;  
Lane 3: Rat lung.



DF9639 staining HepG2 cells by IF/ICC. The samples were fixed with PFA and permeabilized in 0.1% Triton X-100, then blocked in 10% serum for 45 minutes at 25°C. Samples were then incubated with primary Ab(DF9639 1:200) and mouse anti-beta tubulin Ab(T0023 1:200) for 1 hour at 37°C. An AlexaFluor594 conjugated goat anti-rabbit IgG(H+L) Ab(Red) and an AlexaFluor488 conjugated goat anti-mouse IgG(H+L) Ab(Green) were used as the secondary Ab.  
The nuclear counter stain is DAPI(blue).

**IMPORTANT:** For western blot, incubate membrane with diluted primary Ab in 5% w/v milk , 1X TBS, 0.1% Tween@20 at 4°C with gentle shaking, overnight.

For Research Use Only. Not for use in diagnostic and therapeutic procedures. Not for resale without express authorization.