

RAB40C Ab

[Images\(3\)](#)

Cat.#: DF9832	Concn.: ~1mg/ml	Mol.Wt.: 31 kDa,38kDa
Size:	Source: Rabbit	Clonality: Polyclonal

Application: IF/ICC 1:100-1:500, WB 1:1000-3000
 *The optimal dilutions should be determined by the end user.

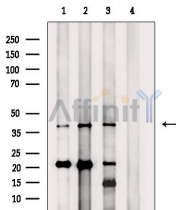
Reactivity: Human,Mouse,Rat,Monkey

Storage: Rabbit IgG in phosphate buffered saline , pH 7.4, 150mM NaCl, 0.02% sodium azide and 50% glycerol. Store at -20 °C. Stable for 12 months from date of receipt.

Purification: The antiserum was purified by peptide affinity chromatography using SulfoLink™ Coupling Resin (Thermo Fisher Scientific).

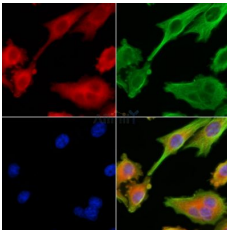
Immunogen: A synthesized peptide derived from human RAB40C, corresponding to a region within C-terminal amino acids.

Uniprot: Q96S21



Western blot analysis of extracts from various samples, using RAB40C Ab.
 Lane 1: HeLa cells, treated with blocking peptide;
 Lane 2: HeLa cells;
 Lane 3: EC304 cells;
 Lane 4: VERO cells.

Observed bands: 38 kDa.



DF9832 staining HepG2 cells by IF/ICC. The samples were fixed with PFA and permeabilized in 0.1% Triton X-100, then blocked in 10% serum for 45 minutes at 25°C. Samples were then incubated with primary Ab(#DF9832) and mouse anti-beta tubulin Ab(#T0023) for 1 hour at 37°C. An AlexaFluor594 conjugated goat anti-rabbit IgG Ab(Red) and an AlexaFluor488 conjugated goat anti-mouse IgG Ab(Green) were used as the secondary Ab.
 The nuclear counter stain is DAPI (blue).

IMPORTANT: For western blot, incubate membrane with diluted primary Ab in 5% w/v milk , 1X TBS, 0.1% Tween@20 at 4°C with gentle shaking, overnight.

For Research Use Only. Not for use in diagnostic and therapeutic procedures. Not for resale without express authorization.