

RHG20 Ab

[Images\(4\)](#)

Cat.#: DF9856	Concn.: ~1mg/ml	Mol.Wt.: 133 kDa
Size:	Source: Rabbit	Clonality: Polyclonal

Application: WB 1:1000-3000, IHC 1:50-1:200
*The optimal dilutions should be determined by the end user.

Reactivity: Human, Mouse, Rat

Storage: Rabbit IgG in phosphate buffered saline, pH 7.4, 150mM NaCl, 0.02% sodium azide and 50% glycerol. Store at -20 °C. Stable for 12 months from date of receipt.

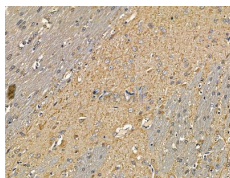
Purification: The antiserum was purified by peptide affinity chromatography using SulfoLink™ Coupling Resin (Thermo Fisher Scientific).

Immunogen: A synthesized peptide derived from human RHG20, corresponding to a region within the internal amino acids.

Uniprot: Q9P2F6



Western blot analysis of extracts from various samples, using RHG20 Ab.
Lane 1: 3t3-11 cells (lps 4h treatment), blocked with antigen-specific peptides.
Lane 2: 3t3-11 cells (lps 4h treatment).
Lane 3: Raw264.7 cells (h202 treatment).



DF9856 at 1/100 staining rat brain tissue by IHC-P. The sample was formaldehyde fixed and a heat mediated antigen retrieval step in citrate buffer was performed. The sample was then blocked and incubated with the primary Ab at 4°C overnight. An HRP conjugated anti-rabbit Ab was used as the secondary Ab.

IMPORTANT: For western blot, incubate membrane with diluted primary Ab in 5% w/v milk, 1X TBS, 0.1% Tween@20 at 4°C with gentle shaking, overnight.

For Research Use Only. Not for use in diagnostic and therapeutic procedures. Not for resale without express authorization.