

## Arrdc4 Ab

[Images\(3\)](#)

|               |                 |                       |
|---------------|-----------------|-----------------------|
| Cat.#: AF9018 | Concn.: ~1mg/ml | Mol.Wt.: 45kDa        |
| Size:         | Source: Rabbit  | Clonality: Polyclonal |

**Application:** WB 1:1000, IF/ICC 1:100-1:500, IHC 1:50-1:200  
\*The optimal dilutions should be determined by the end user.

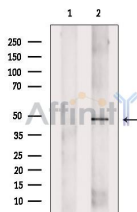
**Reactivity:** Human, Mouse

**Storage:** Rabbit IgG in phosphate buffered saline , pH 7.4, 150mM NaCl, 0.02% sodium azide and 50% glycerol. Store at -20 °C. Stable for 12 months from date of receipt.

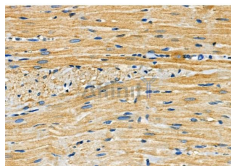
**Purification:** The antiserum was purified by peptide affinity chromatography using SulfoLink™ Coupling Resin (Thermo Fisher Scientific).

**Immunogen:** A synthesized peptide derived from human Arrdc4, corresponding to a region within the internal amino acids.

**Uniprot:** Q8NCT1



Western blot analysis of extracts from K562, using Arrdc4 Ab. The lane on the left was treated with blocking peptide.



AF9018 at 1/100 staining Rat heart tissue by IHC-P. The sample was formaldehyde fixed and a heat mediated antigen retrieval step in citrate buffer was performed. The sample was then blocked and incubated with the primary Ab at 4°C overnight. An HRP conjugated anti-Rabbit Ab was used as the secondary Ab.

**IMPORTANT:** For western blot, incubate membrane with diluted primary Ab in 5% w/v milk , 1X TBS, 0.1% Tween@20 at 4°C with gentle shaking, overnight.

For Research Use Only. Not for use in diagnostic and therapeutic procedures. Not for resale without express authorization.