

## DAPP1/BAM32 Ab

[Images\(1\)](#)

|               |                 |                       |
|---------------|-----------------|-----------------------|
| Cat.#: AF9023 | Concn.: ~1mg/ml | Mol.Wt.: 32kDa        |
| Size:         | Source: Rabbit  | Clonality: Polyclonal |

Application: WB 1:1000, IF/ICC 1:100-1:500

\*The optimal dilutions should be determined by the end user.

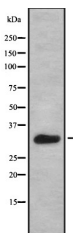
Reactivity: Human, Mouse

Storage: Rabbit IgG in phosphate buffered saline , pH 7.4, 150mM NaCl, 0.02% sodium azide and 50% glycerol. Store at -20 °C. Stable for 12 months from date of receipt.

Purification: The antiserum was purified by peptide affinity chromatography using SulfoLink™ Coupling Resin (Thermo Fisher Scientific).

Immunogen: A synthesized peptide derived from human DAPP1/BAM32, corresponding to a region within the internal amino acids.

Uniprot: Q9UN19



Western blot analysis of BAM32 using HeLa whole cell lysates

**IMPORTANT:** For western blot, incubate membrane with diluted primary Ab in 5% w/v milk , 1X TBS, 0.1% Tween@20 at 4°C with gentle shaking, overnight.

For Research Use Only. Not for use in diagnostic and therapeutic procedures. Not for resale without express authorization.