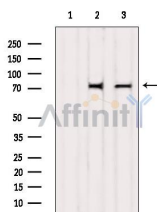


GBP4 Ab

[Images\(2\)](#)

Cat.#: AF9071	Concn.: ~1mg/ml	Mol.Wt.: 73kDa
Size:	Source: Rabbit	Clonality: Polyclonal
Application:	WB 1:1000 *The optimal dilutions should be determined by the end user.	
Reactivity:	Human, Mouse, Rat	
Storage:	Rabbit IgG in phosphate buffered saline, pH 7.4, 150mM NaCl, 0.02% sodium azide and 50% glycerol. Store at -20 °C. Stable for 12 months from date of receipt.	
Purification:	The antiserum was purified by peptide affinity chromatography using SulfoLink™ Coupling Resin (Thermo Fisher Scientific).	
Immunogen:	A synthesized peptide derived from human GBP4, corresponding to a region within C-terminal amino acids.	
Uniprot:	Q96PP9	



Western blot analysis of extracts from various samples, using GBP4 Ab.

Lane 1: B16F10 treated with blocking peptide;

Lane 2: B16F10;

Lane 3: Rat brain.

IMPORTANT: For western blot, incubate membrane with diluted primary Ab in 5% w/v milk, 1X TBS, 0.1% Tween@20 at 4°C with gentle shaking, overnight.

For Research Use Only. Not for use in diagnostic and therapeutic procedures. Not for resale without express authorization.