

## TOB1 Ab

[Images\(1\)](#)

Cat.#: AF9216  
Size:

Concn.: ~1mg/ml  
Source: Rabbit

Mol.Wt.: 40kDa  
Clonality: Polyclonal

Application:

WB 1:1000, IF/ICC 1:100-1:500

\*The optimal dilutions should be determined by the end user.

Reactivity:

Human

Storage:

Rabbit IgG in phosphate buffered saline , pH 7.4, 150mM NaCl, 0.02% sodium azide and 50% glycerol. Store at -20 °C. Stable for 12 months from date of receipt.

Purification:

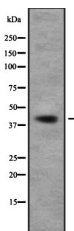
The antiserum was purified by peptide affinity chromatography using SulfoLink™ Coupling Resin (Thermo Fisher Scientific).

Immunogen:

A synthesized peptide derived from human TOB1, corresponding to a region within the internal amino acids.

Uniprot:

P50616



Western blot analysis of TOB1 using HT29 whole cell lysates

**IMPORTANT:** For western blot, incubate membrane with diluted primary Ab in 5% w/v milk , 1X TBS, 0.1% Tween@20 at 4°C with gentle shaking, overnight.

For Research Use Only. Not for use in diagnostic and therapeutic procedures. Not for resale without express authorization.