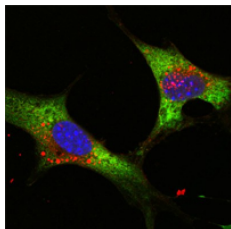


## Goat Anti-Mouse IgG (H+L) FITC -conjugated

[References\(6\)](#) [Images\(1\)](#)

Cat.#: S0007	Concn.: 1mg/ml	Mol.Wt.:
Size:	Source: Goat	Clonality: Polyclonal
Application:	WB 1:100 – 1:500, IF/ICC 1:100 – 1:500 *The optimal dilutions should be determined by the end user.	
Reactivity:	Mouse	
Storage:	0.01M Sodium phosphate, 0.25M NaCl, 50% glycerol, pH7.6. Store at -20°C. Avoid repeated thawing and freezing.	
Purification:	affinity purification.	
Immunogen:	The antiserum was developed in goat using the MOUSE IgG as the immunogen.	
Conjugate:	FITC	



Confocal immunofluorescence analysis of NTERA-2 cells using LIN28 mouse mAb (green).  
Blue: DRAQ5 fluorescent DNA dye.  
Green: Goat Anti-Mouse IgG(H+L) FITC –conjugated

**IMPORTANT:** For western blot, incubate membrane with diluted secondary Ab in 5% w/v milk, 1X TBS, 0.1% Tween@20 at 37°C, 2H.

For Research Use Only. Not for use in diagnostic and therapeutic procedures. Not for resale without express authorization.