

## Flag-Tag Ab

[References\(9\)](#) [Images\(1\)](#)

Cat.#: T0053  
Size:

Concn.: ~1mg/ml  
Source: Rabbit

Mol.Wt.:  
Clonality: Polyclonal

Application:

WB 1:1000-1:30000, IF/ICC: 1:200, IP 1:200

\*The optimal dilutions should be determined by the end user.

Reactivity:

All

Storage:

Rabbit IgG in phosphate buffered saline , pH 7.4, 150mM NaCl, 0.02% sodium azide and 50% glycerol. Store at -20 °C. Stable for 12 months from date of receipt.

Purification:

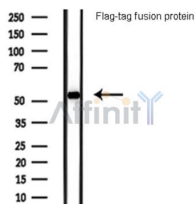
Affinity-chromatography.

Immunogen:

A synthetic peptide DYKDDDDK coupled to KLH.

Description:

FLAG tag polyclonal antibody is part of the series of Tag antibodies, the excellent quality in the research. FLAG tag antibody is a highly sensitive and affinity PAB applicable to FLAG-tagged fusion protein detection. FLAG tag antibody can detect FLAG tags in internal, C-terminal, or N-terminal recombinant proteins.



Western blot analysis of Flag-tag fusion protein, using Flag-Tag Ab.

**IMPORTANT:** For western blot, incubate membrane with diluted primary Ab in 5% w/v milk , 1X TBS, 0.1% Tween@20 at 4°C with gentle shaking, overnight.

For Research Use Only. Not for use in diagnostic and therapeutic procedures. Not for resale without express authorization.