

CdGAP Ab

[Images\(3\)](#)

Cat.#: AF7024	Concn.: ~1mg/ml	Mol.Wt.: 250 kDa
Size:	Source: Rabbit	Clonality: Polyclonal

Application: WB 1:1000
*The optimal dilutions should be determined by the end user.

Reactivity: Human, Mouse, Rat, Monkey

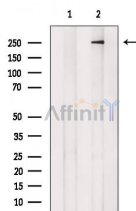
Storage: Rabbit IgG in phosphate buffered saline, pH 7.4, 150mM NaCl, 0.02% sodium azide and 50% glycerol. Store at -20 °C. Stable for 12 months from date of receipt.

Purification: The antiserum was purified by peptide affinity chromatography using SulfoLink™ Coupling Resin (Thermo Fisher Scientific).

Immunogen: A synthesized peptide derived from human CdGAP, corresponding to a region within the internal amino acids.

Uniprot: Q2M1Z3

Description: The Rho family of small GTPases, including Rho, Rac, and Cdc42, act as molecular switches that regulate processes such as cell migration, adhesion, proliferation, and differentiation. They are activated by guanine nucleotide exchange factors (GEFs), which catalyze the exchange of bound GDP for GTP, and inhibited by GTPase activating proteins (GAPs), which catalyze the hydrolysis of GTP to GDP. The serine- and proline-rich GAP protein, Cdc42 GAP (CdGAP), has been shown to be a negative regulator of both Cdc42 and Rac1, but not RhoA (2,3). This protein contains three domains: an amino-terminal GAP domain, a central domain, and a carboxyterminal proline-rich domain containing five Src homology 3 (SH3)-binding sites.



Western blot analysis of extracts from COS-7 cells (uv treatment), using CdGAP Ab. The lane on the left was treated with blocking peptide.

IMPORTANT: For western blot, incubate membrane with diluted primary Ab in 5% w/v milk, 1X TBS, 0.1% Tween@20 at 4°C with gentle shaking, overnight.