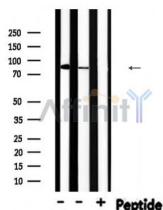


## Phospho-PFKP (Tyr52) Ab

[Images\(2\)](#)

Cat.#: AF8610	Concn.: ~1mg/ml	Mol.Wt.: 84 KD
Size:	Source: Rabbit	Clonality: Polyclonal

Application:	WB 1:100-1:3000 *The optimal dilutions should be determined by the end user.
Reactivity:	Human,Mouse,Rat
Storage:	Rabbit IgG in phosphate buffered saline , pH 7.4, 150mM NaCl, 0.02% sodium azide and 50% glycerol. Store at -20 °C. Stable for 12 months from date of receipt.
Purification:	The Ab is from purified rabbit serum by affinity purification via sequential chromatography on phospho-peptide and non-phospho-peptide affinity columns.
Immunogen:	A synthesized peptide derived from human PFKP around the phosphorylation site of Y52.
Uniprot:	Q01813
Description:	Catalyzes the phosphorylation of D-fructose 6-phosphate to fructose 1,6-bisphosphate by ATP, the first committing step of glycolysis.



Western blot analysis of extracts from various samples, using Phospho-PFKP(Tyr52) Ab.

Lane 1: Rat brain lysates;

Lane 2: Rat muscle lysates;

Lane 3: Rat muscle lysates treated with blocking peptide;

**IMPORTANT:** For western blot, incubate membrane with diluted primary Ab in 5% w/v milk , 1X TBS, 0.1% Tween@20 at 4°C with gentle shaking, overnight.

For Research Use Only. Not for use in diagnostic and therapeutic procedures. Not for resale without express authorization.