

ROR1 Ab

[Images\(2\)](#)

Cat.#: AF7027

Concn.: ~1mg/ml

Mol.Wt.: 101kDa

Size:

Source: Rabbit

Clonality: Polyclonal

Application:

WB 1:1000-3000

*The optimal dilutions should be determined by the end user.

Reactivity:

Human, Mouse

Storage:

Rabbit IgG in phosphate buffered saline, pH 7.4, 150mM NaCl, 0.02% sodium azide and 50% glycerol. Store at -20 °C. Stable for 12 months from date of receipt.

Purification:

The antiserum was purified by peptide affinity chromatography using SulfoLink™ Coupling Resin (Thermo Fisher Scientific).

Immunogen:

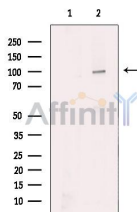
A synthesized peptide derived from human ROR1, corresponding to a region within C-terminal amino acids.

Uniprot:

Q01973

Description:

Has very low kinase activity in vitro and is unlikely to function as a tyrosine kinase in vivo. May act as a receptor for wnt ligand WNT5A which may result in the inhibition of WNT3A-mediated signaling.



Western blot analysis of extracts from caco-2, using ROR1 Ab. The lane on the left was treated with blocking peptide.

IMPORTANT: For western blot, incubate membrane with diluted primary Ab in 5% w/v milk, 1X TBS, 0.1% Tween@20 at 4°C with gentle shaking, overnight.

For Research Use Only. Not for use in diagnostic and therapeutic procedures. Not for resale without express authorization.